



6532 Tower Lane, Claremore, OK 74019
 PHONE (877)-728 3278 FAX (877)-203-1998
 (A Division of Acme Manufacturing Corp.)

Metal Roof Curb Self-Flashing Type FCMR-3

STANDARD FEATURES

Constructed of 18 ga. galv. steel with continuous welded seams and integral base plate for water tight construction and extra strength.

8" wide base flashing for adequate surface for caulking to seal roof.

Upper flashing is 8" wide with cricket style water diverter welded to base.

Lined with 1½" fiberglass fire proof sound attenuating thermal insulation.

Top ledge covered with 1/4" polystyrene gasket for weather seal and to reduce metal to metal conducted noise.

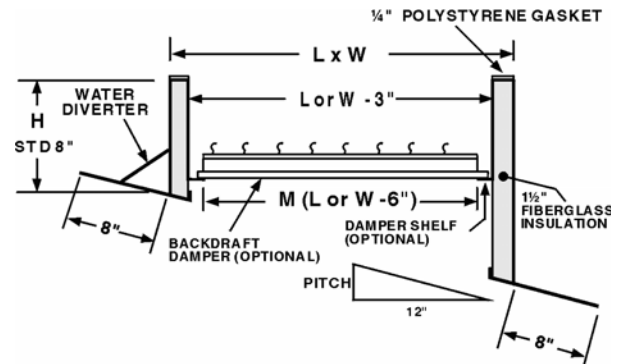
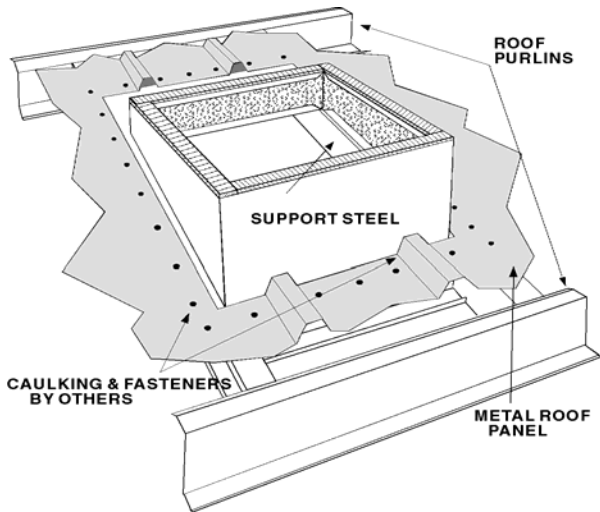
Minimum curb height is 8" on the shortest vertical height.

OPTIONS

- Constructed of 18 ga. galvalume steel or .063 aluminum.
- Interior metal liner.
- Standard heights of 12, 14, 16, 18, 20, 24", or any special height.
- Damper shelf – standard or custom size opening.
- Back draft damper; Damper motor, 120, 240, or 480 vac.
- Security bars.
- Protective or decorative coatings.

PROJECT	
LOCATION	
ARCHITECT	
ENGINEER	
CONTRACTOR	
SUBMITTED BY	
DATE	PO#

**THIS CURB IS DESIGNED FOR INSTALLATION
 BENEATH THE ROOFING.**



Damper shelf supported from top ledge of curb, but supported from base of curb when total rise over length > 2".

SPECIFICATIONS AND DIMENSIONS

REFERENCE	QUAN.	L (Pitch Side)	W	H	PITCH	OPTIONS